



## DE VILLE

CHRONOSCOPE CO-AXIAL RATTRAPANTE

Steel on steel

Caliber  
**3612**

422.10.44.51.06.001

- Co-Axial escapement
- Automatic
- Chronometer
- Rattrapante
- Sapphire crystal
- Anti-reflective treatment on both sides
- 3-year International Warranty
- Water-Resistant to a relative pressure of 10 bar (100 metres/330 feet)



### WATCH FUNCTIONS

The crown has 3 positions:

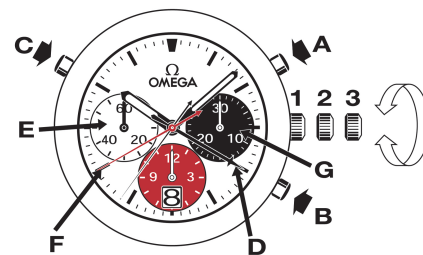
**1. Normal position (wearing position):** when the crown is positioned against the case, the crown ensures that the watch is water-resistant.

**Occasional winding:** if the watch has not been worn for 55 hours or more, wind it up with the crown in position 1.

**2. Correcting the date:** pull the crown out to position 2, turn the crown backwards, then push the crown back to position 1.

*NB: the date cannot be corrected between 9 pm and 12.30 am.*

**3. Time setting:** hours – minutes – seconds. Pull the crown out to position 3. The seconds hand will stop. Turn the crown forwards or backwards. Synchronise the seconds by pushing the crown back to position 1 to coincide with a given time signal.



### CHRONOGRAPH FUNCTIONS

• **Pusher A:** start – stop, start – stop, etc  
Timing to 1/8 of a second for up to 12 hours.

• **Pusher B:** reset (after a stop).

*Note: resetting/zeroing of the sub dials must only be carried out after the chronograph has stopped. Never push the chronograph's two pushers (A and B) simultaneously.*

## CHRONOGRAPH FUNCTIONS WITH SPLIT-SECONDS

The split-seconds function allows split times to be recorded whilst the chronograph is running.

1. Start the chronograph by pressing pusher (A) (start).
2. To record a split time, press pusher (C). The split-seconds hand (D) stops, indicating the split time, whilst the chronograph continues running.

*NB: the split time should be read immediately, since the chronograph totalisers for hours (G), minutes (E) and seconds (F) continue to measure the elapsed time.*

3. Press pusher (C) for the split-seconds hand to catch up with the chronograph seconds hand (F).
4. To record a new split time, start from step 2 above.
5. Press pusher (A) to stop the chronograph.
6. Press pusher (B) to reset.

*NB: the split-seconds hand (D) must have caught up with the chronograph seconds hand (F) as explained in step 3 before the chronograph mechanism is reset/zeroed.*

